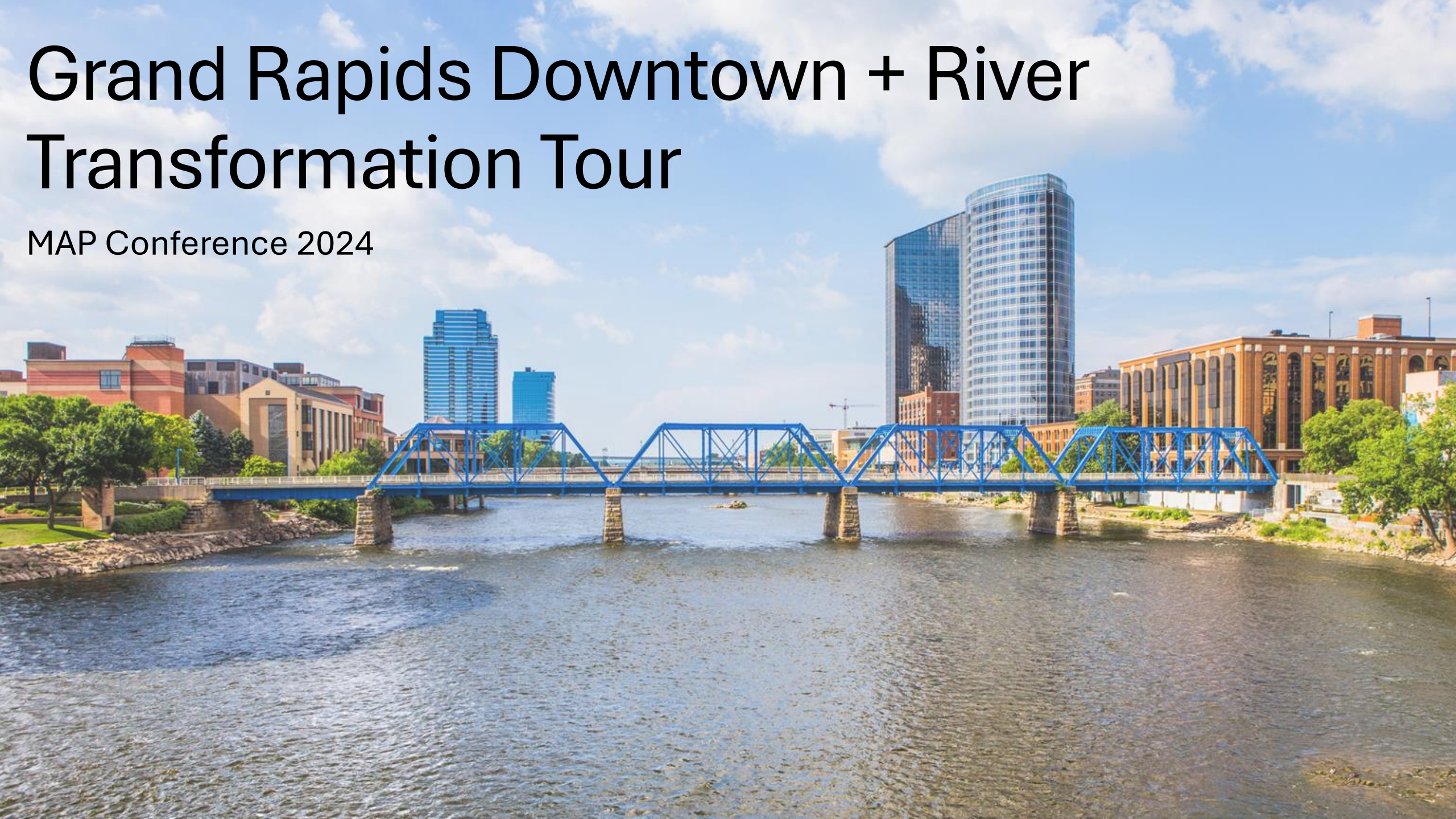


Grand Rapids Downtown + River Transformation Tour

MAP Conference 2024



Itinerary

Stop Location	Directions	Talking Points	Station Time	Speaker	Handout(s)
Amway Grand (#1)	Depart from lobby level of Amway Grand (Pearl Street)	<ul style="list-style-type: none"> Welcome and introductions Framing River redevelopment as central to downtown “project” of Grand Rapids throughout history 	1:00-1:05pm <i>2-min walk to #2</i>	Jay Mark Andy Matt	<ul style="list-style-type: none"> River Planning History
Lyon Square (#2)	Walk north on Riverwalk to Lyon Square	<ul style="list-style-type: none"> Discuss vision for Lyon Square 	1:07-1:15pm <i>3-min walk to #3</i>	Mark Andy	<ul style="list-style-type: none"> Lyon Square Grand River Workforce Collaborative initiative
Pearl Bridge (#3)	Head south toward Pearl Street Bridge	<ul style="list-style-type: none"> Discuss River Edge Trail Improvements Look to the southeast and discuss amphitheater project 	1:18-1:25pm <i>2-min walk to #4</i>	Matt Julie	<ul style="list-style-type: none"> JW to Blue Bridge River Edge Amphitheater
Public Museum (#4)	Finish crossing bridge and arrive at museum	<ul style="list-style-type: none"> Discuss Public Museum renovation 	1:27-1:32pm <i>1-min walk to #5</i>	Jay Matt	<ul style="list-style-type: none"> Public Museum
Ah-Nab-Awen Park (#5)	Cross street to Ah-Nab-Awen Park and head north to Bridge Street (take low path along river as you proceed north)	<ul style="list-style-type: none"> Highlight Lower Reach Project area (Fulton to Bridge) Highlight recent flood protection improvements in the park Point out Ford Museum & President Ford and Mrs. Ford’s burial site. Stop at plaque: talk about Indigenous People and plans for the improvement to Ah-Nab-Awen Park 	1:28-1:38pm <i>10-min walk to #6</i>	Matt Jay	<ul style="list-style-type: none"> Lower Reach Ah-Nab-Awen Park
Bridge Street Corridor (#6)	Turn left on Bridge and head west	<ul style="list-style-type: none"> Rezoning of westside to facilitate activity Success of Bridge Street corridor (Bridge Street Market; New Holland; Mixed-Use buildings, etc.) 	1:48-1:53pm <i>3-min walk to #7</i>	Mark	
Soccer Stadium Site (#7)	Turn left on Summer walk to Blumrich to consider soccer stadium site	<ul style="list-style-type: none"> Discuss future soccer stadium Las Canchas + community garden (redeveloping parking into community; active uses) 	1:56-2:06pm <i>15-min walk to #8</i>	Julie Mark Andy	<ul style="list-style-type: none"> Soccer Stadium

Itinerary (cont.)

Fish Ladder Park (#8)	Turn north at Bridgewater Place and head to Fish Ladder Park	<ul style="list-style-type: none"> • General site update, why the dam was built, how it serves as lamprey barrier • Lamprey giveaway! (trivia) • View 555 Monroe – highlight land acquisition and temporary programming; future vision 	2:19-2:30pm <i>5-min walk to #9</i>	Matt Jay Andy Mark	<ul style="list-style-type: none"> • Fish Ladder Park • 555 Monroe
6th St. Bridge (#9)	Walk north along the Riverwalk then cross the River onto the bridge	<ul style="list-style-type: none"> • Upper Reach update (Bridge to Ann) • Discuss River For All planning process • Discuss Water Quality Monitoring Station • Highlight limestone bedrock rapids • Point out flood walls and no access • Discuss levee naturalization and change in flood protection 	2:35-2:45pm <i>5-min walk to #10</i>	Jay Matt	<ul style="list-style-type: none"> • River for All
Canal Park (#10)	Walk back north into Canal Park up to kiosk	<ul style="list-style-type: none"> • Development of North Monroe since rezoning to CC: Embassy Suites, Corewell building, etc. • Hill + River discussion • Discussion of Grand River Overlay + height amendments to facilitate construction of riverwalk and access to it 	2:50-2:59pm <i>1-min walk to #11</i>	Jay Matt Mark Andy Julie	<ul style="list-style-type: none"> • Canal Park River Edge • Coldbrook • Water Dept Storage Yard • Hill + River
City Built (#11)	Cross street to arrive at City Built	<ul style="list-style-type: none"> • Discussion of Grand River Network • Designation of Grand River as water trail • Attendees can either take DASH back to hotel • Or stay at City Built for a drink and snack 	3:00pm <i>10-minute bus back to Amway</i> <i>20-min walk back</i>	Andy Mark	<ul style="list-style-type: none"> • Grand River Greenway • Lower Grand River Water Trail

Tour guides:

- Jay Steffen, City of Grand Rapids
- Andy Guy, DGRI
- Mark Miller, DGRI
- Matthew Chapman, GRWW
- Julie Tschirhart, Progressive Companies

Grand River Planning History

1923	City Beautiful Movement
1963	Urban Renewal
1978	Grand River Edges
2002	Master Plan (Urbanism New or Old)
2004	Bicycle and Pedestrian Facilities Plan
2005	Neighborhood Pattern Workbook
2007	Form-Based Zoning Ordinance
2011	Green Grand Rapids (MP Update)
2013	Michigan Street Corridor Plan
2015	GR Forward
2016	Vital Streets Plan
2017	Parks and Rec. Strategic Master Plan



Lyon Square

- Create a **flexible, four seasons** space that brings people together and **connects** them to their **context**.
- Establish a **memorable destination** that promotes **culture** of engagement and **inclusion**.
- Create a **comfortable**, shared place for pedestrians and vehicles in an **equitable environment**.





Welcome

Create curiosity that entices pedestrians along Monroe Avenue to venture down Lyon Street towards the River.



Engage

Provide a space for people that emphasizes context and acknowledges the uniqueness that makes Grand Rapids what it is.





Converge

At the river's edge create a destination for people to gather, socialize, and appreciate how amazing it is to be in Grand Rapids.





Grand River Workforce Collaborative Initiative

Grand River Workforce Collaborative partners joined forces to create, foster, or elevate workforce and training opportunities on Grand River development sites. By utilizing Awareness & Equity as the foundation, GRWFC will educate and engage community members while also providing opportunities for economic stability and economic development.

Partners



Landscape Apprenticeship

In partnership with Rockwell Earthworks, the Landscape Apprenticeship was established. Recruitment included intentional neighborhoods and organizations of focus and the opportunity age of **18–24-years of age**. Participants will gain skills in the **24-month** Department of Labor Apprenticeship that includes horticulture, architecture, and construction components. The beginning wages for participants are **\$17** and on a staggering scale up to **\$22**. Upon completion, the 10 participants will receive a D.O.L. Landscaping Certification.

Apprentice Information

Applicants

10 were selected
out of 30+
applicants

Ethnicity

- 55% Black/African American
- 33% White/Caucasian
- 11% Hispanic, Latinx, or Spanish Origin

Age

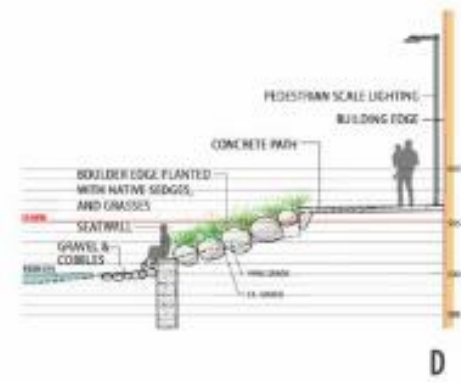
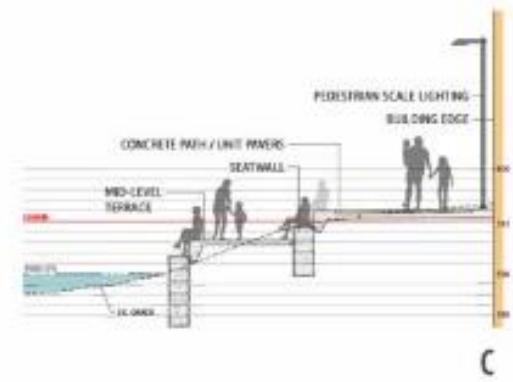
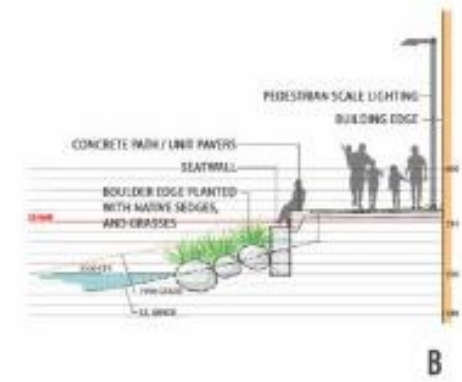
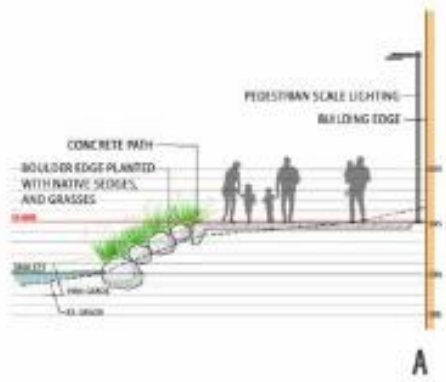
- 66%- 18-24 Years Old
- 11%- 25-30 Years Old
- 22%- 30+ Years Old

Age

44% of participants are
from the City's
Neighborhoods of Focus



PLAN VIEW 
LINE 1'-1/2"



Acrisure Amphitheater



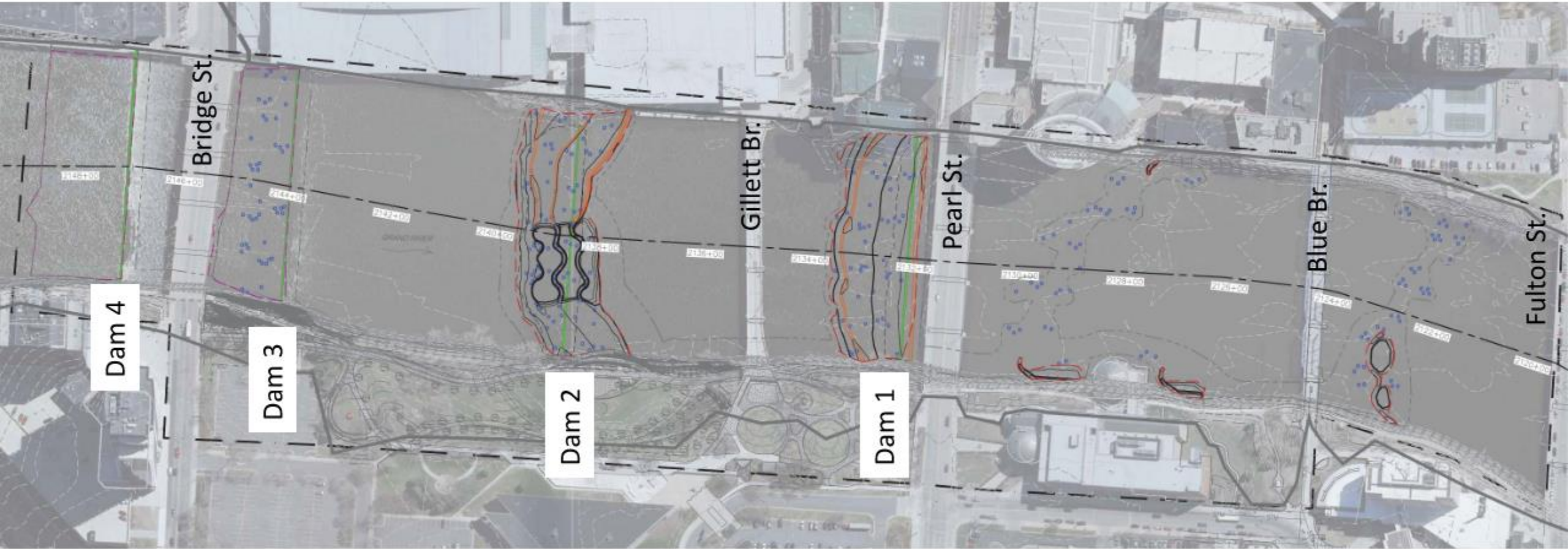


Public Museum

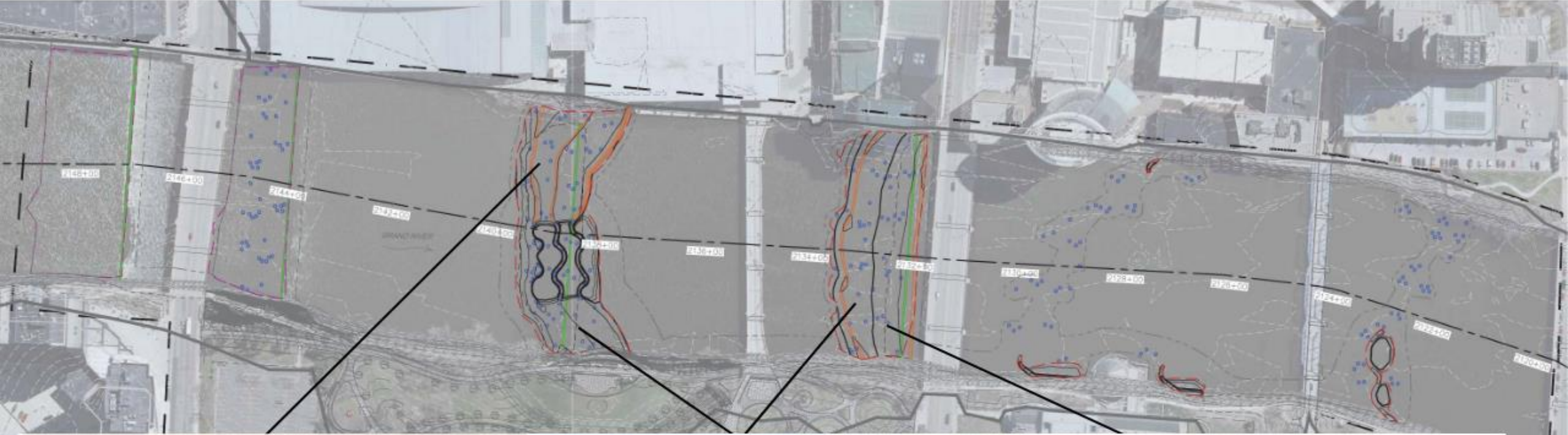




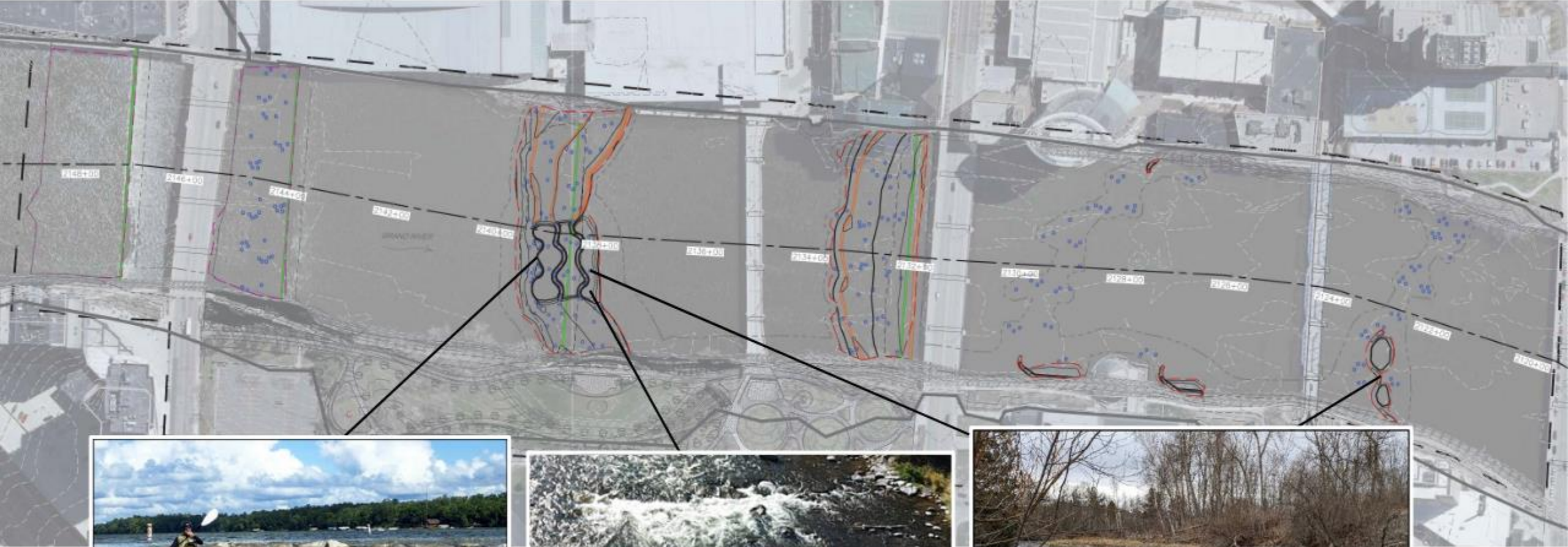
Lower Reach



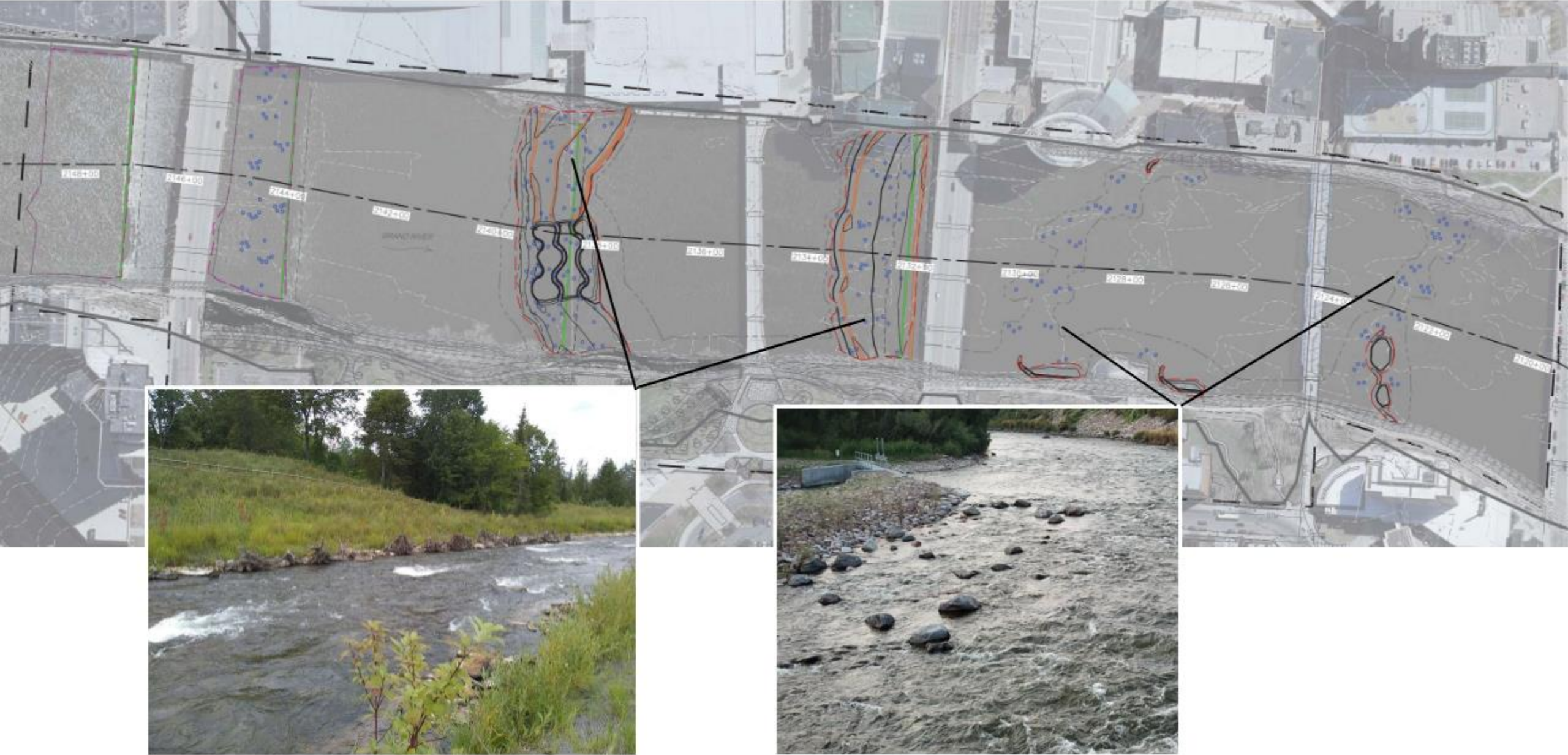
Design Element: Constructed Riffles



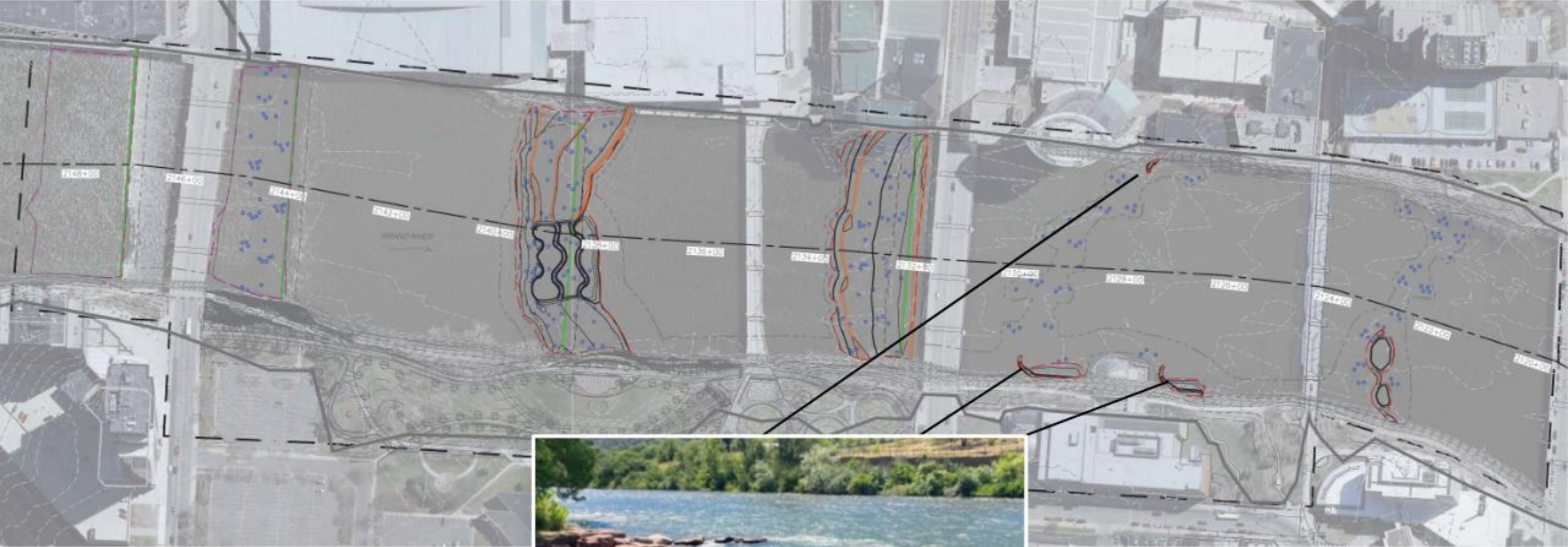
Design Element: Boulder Arch Structures

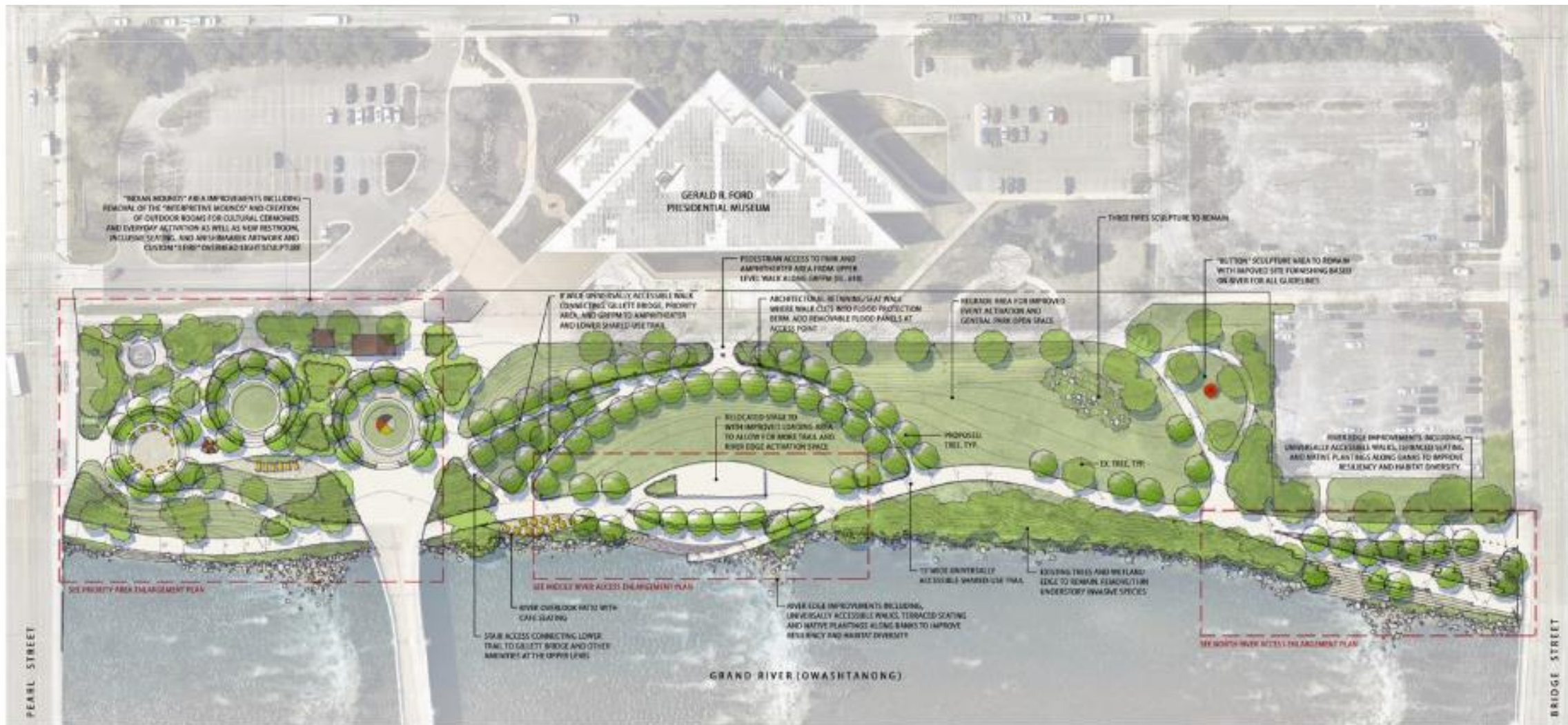


Design Element: Emergent Habitat Boulders



Design Element: Bank Vane Structures





AH-NAB-AWEN PARK

OVERALL MASTER PLAN-OPTION B

City of Grand Rapids, Michigan
APRIL 2020



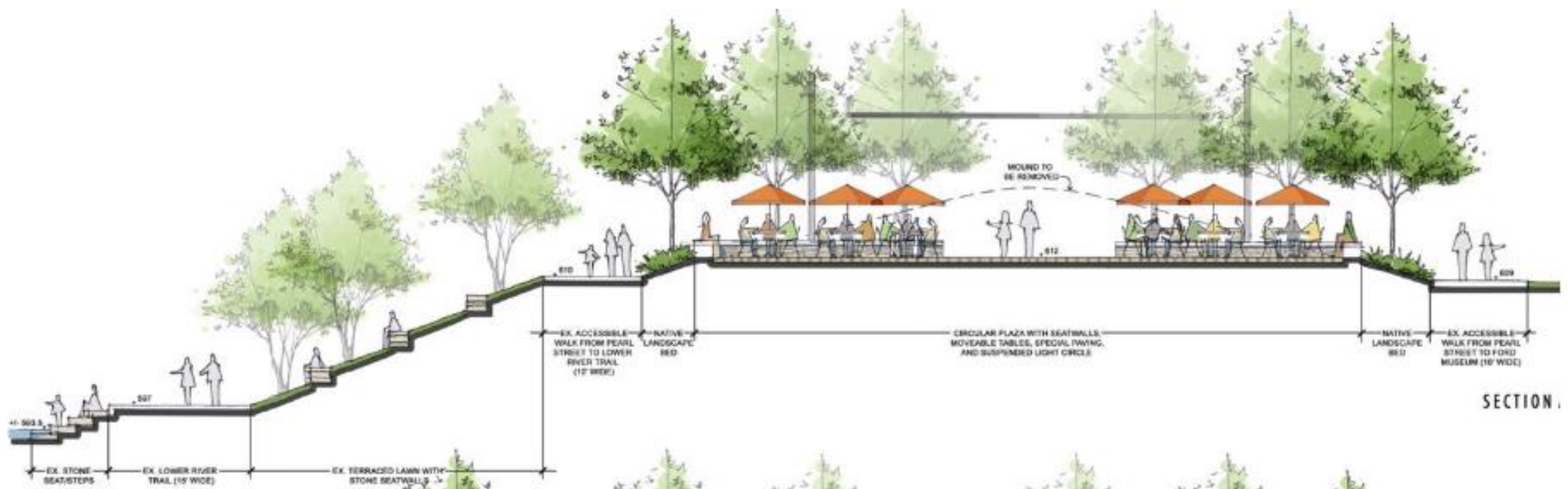


AH-NAB-AWEN PARK

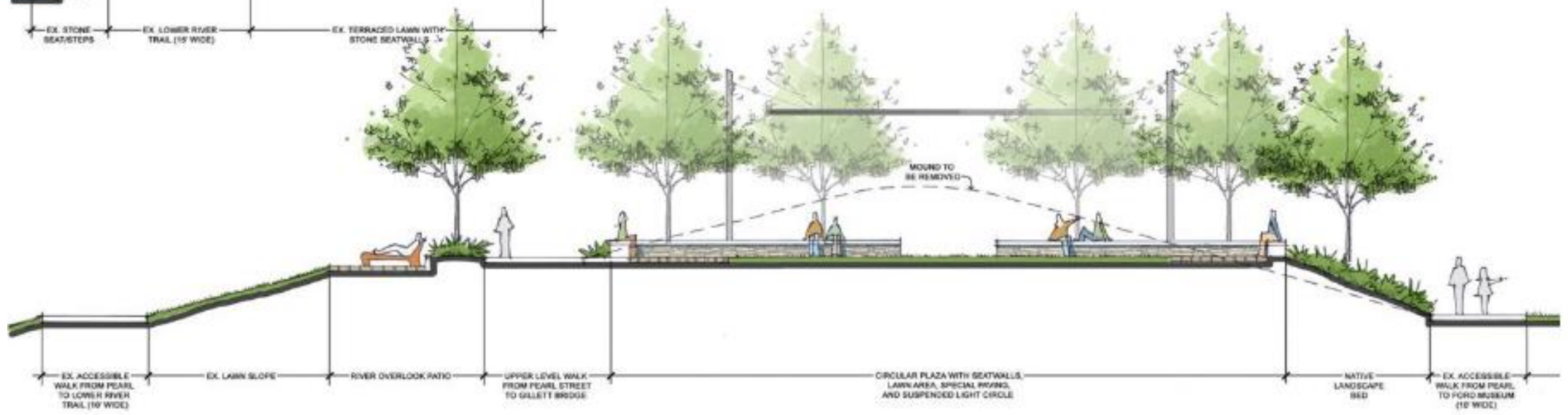
PRIORITY AREA CONCEPT

City of Grand Rapids, Michigan
 APRIL 2020





SECTION I



SECTION II

AH-NAB-AWEN PARK

PRIORITY AREA CONCEPT

City of Grand Rapids, Michigan
APRIL 2020



Soccer Stadium



View from Blumrich and Winter (looking SE)





Fish Ladder Park – Proposed



555 Monroe – Existing



555 Monroe – Proposed



RIVER FOR ALL

What is a "River for All" and why is it important?

THE NUMBERS... Participants placed a dot next to their preferred usage for each natural, urban, and adaptive reuse character area.



SURVEY RESULTS

A survey was created by the Urban Ecology class at Grand Rapids Middle School. They administered it for four hours on Friday, September 26th. There were 117 respondents.



What would you add to the river edge?*



What type of activities are along the river edge do you prefer?*



Do you think creating a pedestrian village island was helpful?*



What river activity do you identify most with?*



What is your age?*



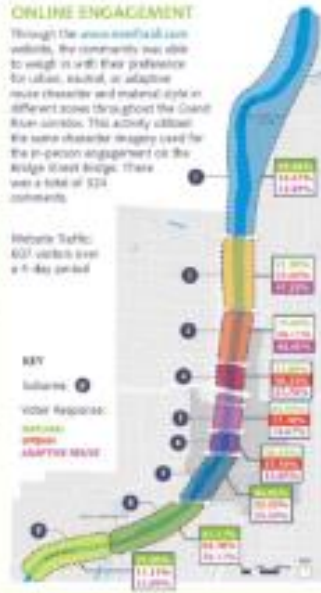
* Some results do not reflect the findings by the demographic comparison as the survey was administered throughout the 4-day engagement process.

ONLINE ENGAGEMENT

Through the online social media campaigns, the community was able to weigh in with their preferences for urban, natural, or adaptive reuse character and material style in different areas throughout the Grand River corridor. This activity utilized the same character imagery used for the in-person engagement on the Bridge Street Bridge. There was a total of 524 comments.

Website Traffic: 627 visitors over a 4-day period

KEY
Suburban
Urban
Adaptive Reuse



How many people live in your household?*



What is your average annual household income?*



With which gender do you identify?*



REIMAGINING THE RIVER



2002 Grand Rapids Master Plan

- Assessing the viability of the river and upgrading infrastructure along the edge through innovative public-private partnerships
- Establishing preservation and restoration opportunities

100% participation
in main process



2010 Grand Rapids Whitewater

Reimagining the Grand River to improve overall river health and recreational opportunities within the region

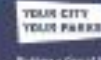
100% of participants
in main process



2018 Green Grand Rapids

Reimagining and reworking an urban, accessible, beautiful, and green river

100% participation
in work process



2017 Parks & Recreation Strategic Master Plan

Building a Green River Master Plan and using the plan to drive additional investments to create a connected network

100% of participants
in main process

2015 GR Forward

- Creating an outdoor recreation city
- Connecting Grand Rapids to the future in a regional way that inspires
- Enhancing neighborhood access to the river

100% participation
in main process

OWASHTANONG



2017 Grand Rapids River for All

Reimagining the river and driving economic development through a strategic plan to develop opportunities to invest in a 7.5-mile connected trail network linking the river corridor

100% participation
in main process

www.riverforall.com

Canal Park River Edge



CANAL PARK RECONSTRUCTION

GRAND RAPIDS, MICHIGAN
03. 13. 2023

DESIGN DEVELOPMENT PLAN





CANAL PARK IMPROVEMENTS

Universally Accessible Cultural Playground



Parks and
Recreation
CITY OF GRAND RAPIDS

VIRIDIS
Design Group



CANAL PARK IMPROVEMENTS

Multi-Purpose Pavilion & Plaza



Parks and
Recreation
CITY OF GRAND RAPIDS

VIRIDIS
Design Group



Coldbrook – Existing



Coldbrook – Proposed



Water Depot Storage Yard – Existing

STORAGE YARD



Water Depot Storage Yard – Proposed

PROJECT COMPONENTS

AREAS OF WORK

Hill + River Network

1. Street Improvements

- Division & Ionia reconfiguration and linear park
- Streetscape and mobility improvements throughout Monroe North

2. Hill Side Park

- Connect from the neighborhood down the steep slope.
- Connection from Hastings down the hill side.

3. Rail Tunnel

- Pedestrian / non-motorized connection from Bond under the highway to MSU property for public access.



NEWBERRY LOOKING SOUTH



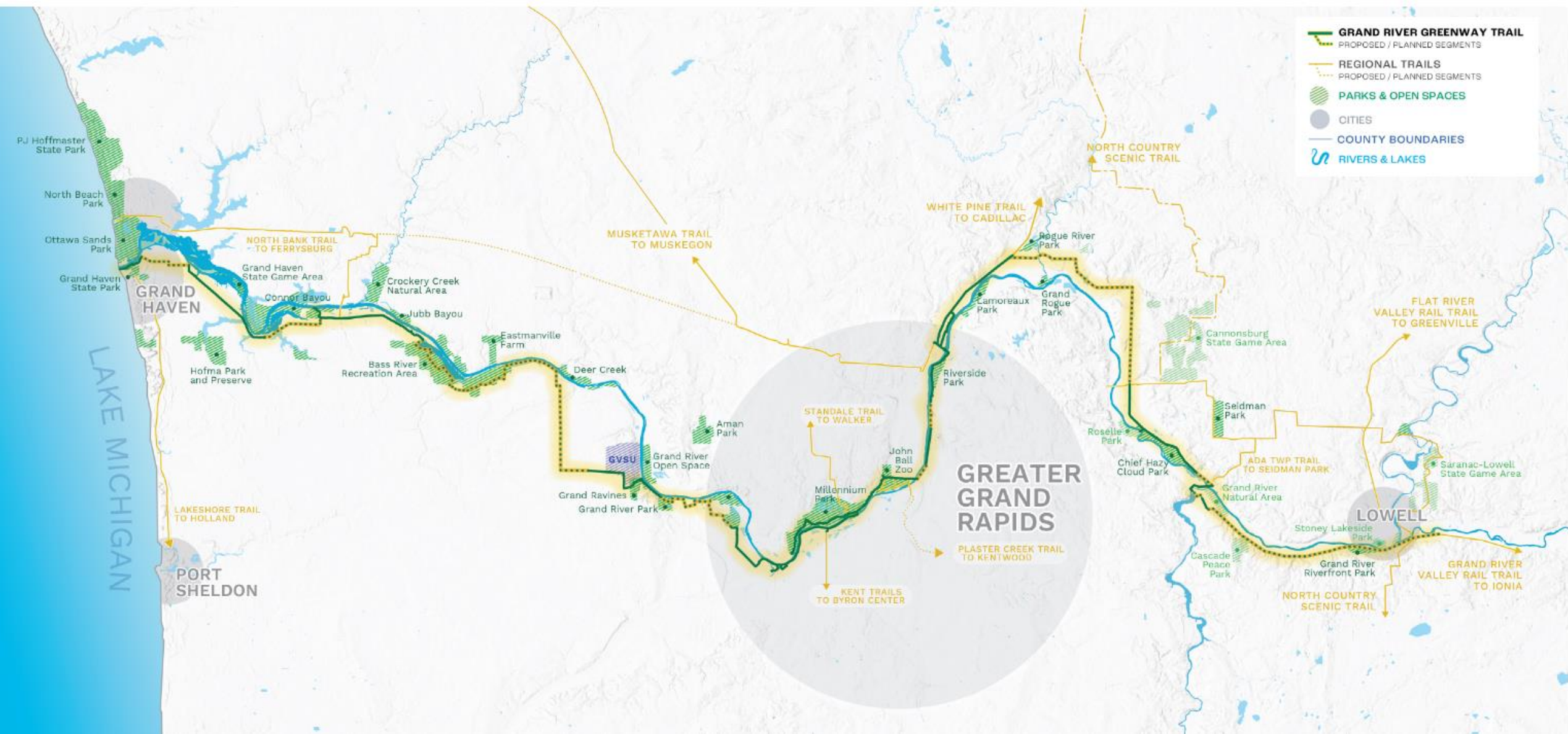
FAIRBANKS

NEWBERRY

NORTH ENTRANCE


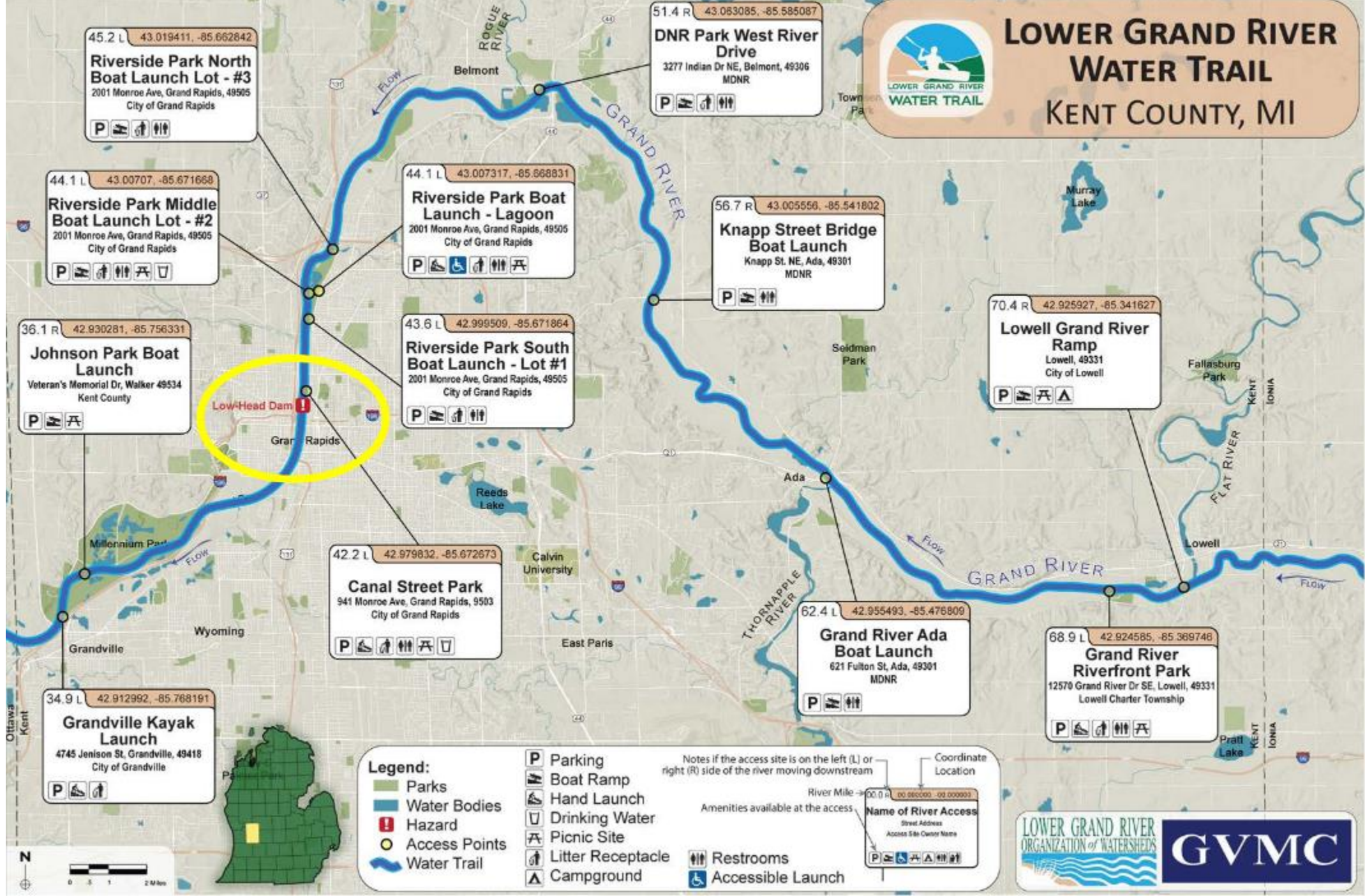


Grand River Greenway



LOWER GRAND RIVER WATER TRAIL

KENT COUNTY, MI

45.2 L 43.019411, -85.662842
Riverside Park North Boat Launch Lot - #3
 2001 Monroe Ave, Grand Rapids, 49505
 City of Grand Rapids
 P [Boat Ramp] [Hand Launch] [Drinking Water] [Picnic Site]

51.4 R 43.083085, -85.585087
DNR Park West River Drive
 3277 Indian Dr NE, Belmont, 49306
 MDNR
 P [Boat Ramp] [Hand Launch] [Drinking Water] [Picnic Site]

44.1 L 43.00707, -85.671668
Riverside Park Middle Boat Launch Lot - #2
 2001 Monroe Ave, Grand Rapids, 49505
 City of Grand Rapids
 P [Boat Ramp] [Hand Launch] [Drinking Water] [Picnic Site] [Accessible Launch]

44.1 L 43.007317, -85.668831
Riverside Park Boat Launch - Lagoon
 2001 Monroe Ave, Grand Rapids, 49505
 City of Grand Rapids
 P [Boat Ramp] [Hand Launch] [Drinking Water] [Picnic Site] [Accessible Launch]

56.7 R 43.005550, -85.541802
Knapp Street Bridge Boat Launch
 Knapp St. NE, Ada, 49301
 MDNR
 P [Boat Ramp] [Hand Launch] [Drinking Water] [Picnic Site]

36.1 R 42.930281, -85.756331
Johnson Park Boat Launch
 Veteran's Memorial Dr, Walker 49534
 Kent County
 P [Boat Ramp] [Hand Launch] [Drinking Water] [Picnic Site]

43.6 L 42.998509, -85.671864
Riverside Park South Boat Launch - Lot #1
 2001 Monroe Ave, Grand Rapids, 49505
 City of Grand Rapids
 P [Boat Ramp] [Hand Launch] [Drinking Water] [Picnic Site]

70.4 R 42.925927, -85.341627
Lowell Grand River Ramp
 Lowell, 49331
 City of Lowell
 P [Boat Ramp] [Hand Launch] [Drinking Water] [Picnic Site]

42.2 L 42.979832, -85.672673
Canal Street Park
 941 Monroe Ave, Grand Rapids, 9503
 City of Grand Rapids
 P [Boat Ramp] [Hand Launch] [Drinking Water] [Picnic Site]

62.4 L 42.955493, -85.476809
Grand River Ada Boat Launch
 621 Fulton St, Ada, 49301
 MDNR
 P [Boat Ramp] [Hand Launch] [Drinking Water] [Picnic Site]

68.9 L 42.924585, -85.369748
Grand River Riverfront Park
 12570 Grand River Dr SE, Lowell, 49331
 Lowell Charter Township
 P [Boat Ramp] [Hand Launch] [Drinking Water] [Picnic Site]

34.9 L 42.912992, -85.768191
Grandville Kayak Launch
 4745 Jenison St, Grandville, 49418
 City of Grandville
 P [Boat Ramp] [Hand Launch] [Drinking Water] [Picnic Site]

Legend:

- Parking
- Boat Ramp
- Hand Launch
- Drinking Water
- Picnic Site
- Litter Receptacle
- Campground
- Parks
- Water Bodies
- Hazard
- Access Points
- Water Trail

Notes if the access site is on the left (L) or right (R) side of the river moving downstream

Amenities available at the access

Coordinate Location

River Mile

Name of River Access

Street Address

Access Site Owner Name

Restrooms

Accessible Launch

